

SURVEY CONTROL DATA

SEE SURVEY DATA SHEETS

DESIGN DATA

AADT (TWO-WAY) 2017= 10,347
AADT (TWO-WAY) 2040 = 23,980
K (DHW/ADT TWO WAY) = 9%
D = 64%
T (% of ADT) = 2%
ESALS(27 YEAR) = 2.23 M
T(DHW)= 2%
T3= 1%
V = 35 mph



LOCATION MAP

ENTIRE PROJECT IS WITHIN NORMAN CITY LIMITS,
POPULATION 115,562 (2012)

SCALES

PLAN 1"=30'
PROFILE HOR. 1"=30'
PROFILE VER. 1"=5'
LAYOUT 1"=1000'

CONVENTIONAL SYMBOLS

	PROPOSED ROADS
	RAILROADS
	SECTION LINES
	QUARTER SECTION LINES
	FENCES
	EXISTING ROADS
	CENTERLINE OF SURVEY
	TELEPHONE & TELEGRAPH
	POWER LINES
	OIL WELLS
	BUILDINGS
	DRAINAGE STRUCTURES - IN PLACE
	DRAINAGE STRUCTURES - NEW
	RIGHT-OF-WAY LINES - EXISTING
	RIGHT-OF-WAY LINES - PRIOR
	CONTROLLED ACCESS
	RIGHT-OF-WAY FENCE
	PROPERTY LINE
	WATER LINE
	GAS LINE
	OIL LINE
	STORM SEWER
	SANITARY SEWER
	COMMUNICATION LINES

2009 OKLAHOMA STANDARD SPECIFICATIONS FOR HIGHWAY CONSTRUCTION
ENGLISH GOVERN. APPROVED BY THE U.S. DEPARTMENT OF TRANSPORTATION,
FEDERAL HIGHWAY ADMINISTRATION, SEPTEMBER 21, 2009. SUPPLEMENTAL
SPECIFICATIONS TO THE 2009 STANDARD SPECIFICATIONS TO GOVERN OVER
THE STANDARD SPECIFICATIONS.

ROADWAY LENGTH 1990.49 FT. 0.377 MI.
SH-9 LENGTH 810.00 FT. 0.153 MI.
BRIDGE LENGTH 0.00 FT. 0.000 MI.
PROJECT LENGTH 2800.49 FT. 0.530 MI.

EQUATIONS: NONE

STATE OF OKLAHOMA
DEPARTMENT OF TRANSPORTATION

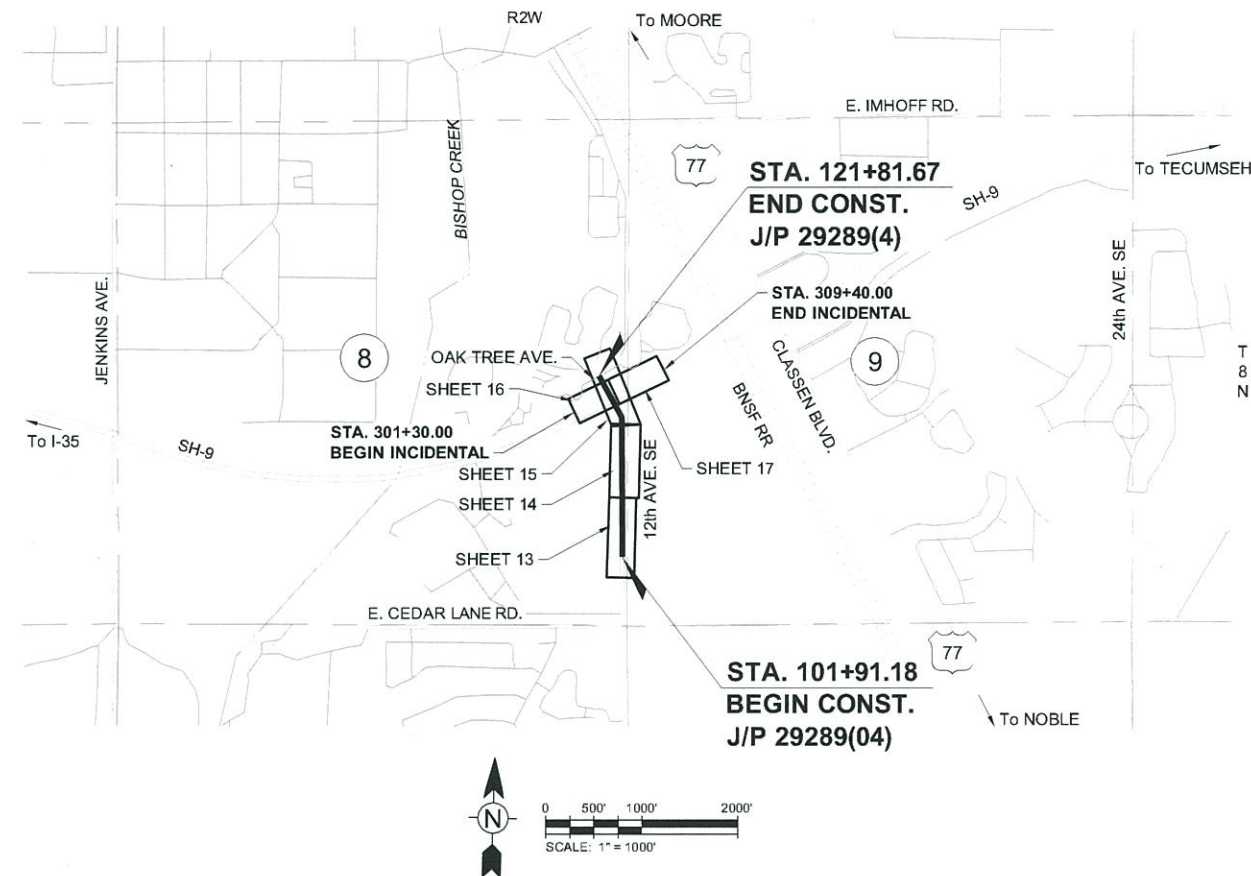
Federal Aid Project No. : STP-214C(080)AG
PLAN OF PROPOSED

STREET WIDENING

CITY OF NORMAN - CONTRACT NO. K-1213-161
12th AVENUE SE
GRADING, DRAINAGE AND SURFACING PLANS
CLEVELAND COUNTY

CONTROL SECTION NO. 09-14-09

STATE JOB NO. 29289(04)



OKLAHOMA DEPARTMENT OF TRANSPORTATION

FED. ROAD DIST. NO.	STATE	STATE JOB NO.	FISCAL YEAR	SHEET NO.	TOTAL SHEETS
	OKLA	29289(04)		1	

DESCRIPTION	REVISIONS	DATE
1. REV. STANDARD DRAWING LIST		7/24/2017

SHEET INDEX

NO.	SHEET TITLE
1	TITLE SHEET
2-3	TYPICAL SECTIONS
4	SUMMARY OF PAY QUANTITIES (ROADWAY)
5	SUMMARY OF PAY QUANTITY NOTES (ROADWAY)
6	SUMMARY OF PAY QUANTITY & NOTES (TRAFFIC)
7-8	TRAFFIC SIGNAL PAY QUANTITIES AND NOTES
9-11	SUMMARY SHEETS
12	EXISTING DRAINAGE MAP
13	PROPOSED DRAINAGE MAP
14	MASS DIAGRAM
15	STORMWATER MANAGEMENT PLAN
16-20	PLAN AND PROFILE
21-22	REMOVAL PLAN
23-24	JOINT LAYOUT PLAN
25-28	SIGNAGE & STRIPING PLAN
29	EROSION CONTROL PLAN
30-33	ADA RAMP DETAILS
34	TRAFFIC CONTROL - PH I
35	TRAFFIC CONTROL - PH II
36-38	TRAFFIC CONTROL - PH III
39-41	TRAFFIC CONTROL - PH IV
42-44	TRAFFIC CONTROL - PH V
45-47	TRAFFIC CONTROL - PH VI
T1-T6	SIGNAL PLAN
X1-X23	CROSS SECTIONS
1-5	SURVEY DATA

THE FOLLOWING STANDARD DRAWING SHALL BE REQUIRED FOR THIS PROJECT

ROADWAY	TRAFFIC
CI-1-2	PMAP1-2-00
CIG-3-0	PM1-1-02
CSCD-5-3	SPBP1-1-00
ECM2-3-0	SA1-1-02
LECS-4-1	ID1-1-00
LTU-4-0	ID2-1-00
MFC-4-1	TSSS1-1-00
MJB-3-1	PWD1-2-00
SPI-4-1	CC1-1-00
SSCD-3-1	TSSP1-1-00
SSIF-4-0	MAD1-1-00
SSS-1-1	RPMAD1-1-00
TSD-2-0	MPMAD1-1-00
PDT-1-3	MDL1-1-00
TRFD-1-2	MDL2-1-00
ASCD-5-2	CCD1-1-00
TSC1-3-2	PBD1-1-00
TSC2-3-2	HLPD1-1-00
WCR-3-1	SCD1-1-00
PCES-4-1	PM4-1-01
TWD-1-0	TWD1-0
SMD-3-1	SMD3-1
	SBS1-1-00
	SBS2-1-00
	SBS3-1-00
	SNS1-1-02
	SPD1-1-00
	SSA1-1-00
	SSA2-1-00
	TCS1-1-01
	TCS2-1-00
	TCS3-1-01
	TCS4-1-01
	TCS5-1-00
	TCS6-1-02
	TCS7-1-02
	TCS8-1-00
	TCS9-1-01
	TCS10-1-00
	TCS11-1-01
	TCS12-1-00
	TCS13-1-00
	TCS14-1-00
	TCS15-1-00
	TCS16-1-00
	TCS17-1-00
	TCS18-1-01
	TCS19-1-01
	TCS20-1-00
	TCS21-1-02
	TCS22-1-00
	TCS23-1-00
	TCS24-1-00
	TCS25-1-00
	TCS26-1-00
	TCS27-1-00
	TCS28-1-00
	TCS29-1-00
	TCS30-1-00
	TCS31-1-01
	TCS32-1-00
	TCS33-1-00
	TCS34-1-00
	TCS35-1-00
	TCS36-1-00
	TCS37-1-00
	TCS38-1-00
	TCS39-1-00
	TCS40-1-00
	TCS41-1-00
	TCS42-1-00
	TCS43-1-00
	TCS44-1-00
	TCS45-1-00
	TCS46-1-00
	TCS47-1-00
	TCS48-1-00
	TCS49-1-00
	TCS50-1-00
	TCS51-1-00
	TCS52-1-00
	TCS53-1-00
	TCS54-1-00
	TCS55-1-00
	TCS56-1-00
	TCS57-1-00
	TCS58-1-00
	TCS59-1-00
	TCS60-1-00
	TCS61-1-00
	TCS62-1-00
	TCS63-1-00
	TCS64-1-00
	TCS65-1-00
	TCS66-1-00
	TCS67-1-00
	TCS68-1-00
	TCS69-1-00
	TCS70-1-00
	TCS71-1-00
	TCS72-1-00
	TCS73-1-00
	TCS74-1-00
	TCS75-1-00
	TCS76-1-00
	TCS77-1-00
	TCS78-1-00
	TCS79-1-00
	TCS80-1-00
	TCS81-1-00
	TCS82-1-00
	TCS83-1-00
	TCS84-1-00
	TCS85-1-00
	TCS86-1-00
	TCS87-1-00
	TCS88-1-00
	TCS89-1-00
	TCS90-1-00
	TCS91-1-00
	TCS92-1-00
	TCS93-1-00
	TCS94-1-00
	TCS95-1-00
	TCS96-1-00
	TCS97-1-00
	TCS98-1-00
	TCS99-1-00
	TCS100-1-00



TETRA TECH

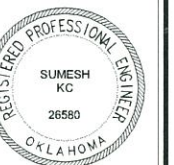
PREPARED BY:
TETRA TECH
FOR THE OKLAHOMA
DEPARTMENT OF TRANSPORTATION

Sumesh KC
OKLA. REG. NO. 26580

CA 2388
(EXP. 06-30-17)

07/24/2017
DATE

SUMESH KC, P.E.
OKLA. REG. NO. 26580



CITY OF NORMAN

OKLAHOMA
DEPARTMENT OF TRANSPORTATION

DEPARTMENT OF TRANSPORTATION
FEDERAL HIGHWAY ADMINISTRATION

DATE APPROVED 7/25/17

BY [Signature] CITY ENGINEER

PROJECT NO. 29289(04)

DATE APPROVED

BY [Signature] CHIEF ENGINEER

DATE APPROVED

BY [Signature] DIVISION ADMINISTRATOR

SHEET NO. 1